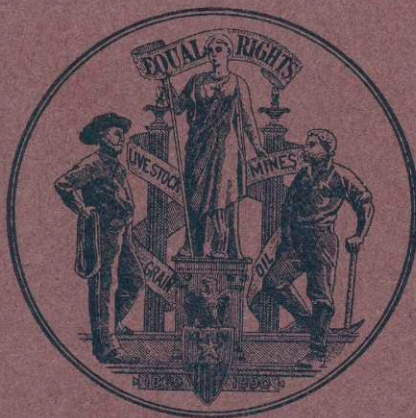


**REPORT**  
of the  
**Wyoming Commission**  
of the  
**Lewis and Clark**  
**Exposition**  
**1905**



REPORT  
OF THE  
WYOMING COMMISSION  
OF THE  
LEWIS AND CLARK  
EXPOSITION

---

History of the Commission and its Work, and  
List of Awards received by Wyoming  
Exhibitors, at the Lewis and  
Clark Exposition held  
at Portland, Ore.

1905

---

1906  
LEADER PUBLISHING COMPANY  
CHEYENNE, WYO.

# Report of the Commission

---

CHEYENNE, WYO., January 29, 1906.

HON. B. B. BROOKS,

*Governor of Wyoming:*

We, the undersigned, C. B. Richardson, Commissioner-in-chief, and W. C. Deming, Secretary, of the Wyoming Commission of the Lewis and Clark Exposition, do hereby most respectfully make the following report.

By act of the Eighth Legislature of the State of Wyoming, in 1905, provision was made for appointment by the Governor of a Commission of five members to secure a collection of the resources and products of Wyoming and to properly display and care for the same at the Lewis and Clark Exposition in 1905, celebrating the One Hundredth Anniversary of the expedition of Lewis and Clark into the Northwest Territory. By the same act the Governor of Wyoming was made an *ex officio* member of the Commission.

The law creating said Commission also appropriated \$10,000 in addition to \$5,658.23, the unexpended balance from the Louisiana Purchase Exposition Fund, making a total appropriation of \$15,658.23 for the Lewis and Clark Exposition.

## COMMISSION NAMED AND ORGANIZED.

In pursuance of such act of the Wyoming Legislature Governor Bryant B. Brooks appointed the following commissioners:

Clarence B. Richardson, Commissioner-in-chief, George E. Pexton, John L. Baird, B. C. Buffum and W. C. Deming.

On the seventh day of March, 1905, at the call of Governor Brooks, *ex officio* member of the Commission, the following members met at the State Capitol in Cheyenne: Governor B. B. Brooks,

C. B. Richardson, George E. Pexton, B. C. Buffum and W. C. Deming.

Governor Brooks acted as temporary chairman and Mr. Deming as temporary secretary. Under the order of permanent organization, the following officers were chosen: Governor B. B. Brooks, President; George E. Pexton, Vice President; W. C. Deming, Secretary.

After a full discussion of the character and scope of the exhibit to be made at the Portland Exposition, it was decided to confine Wyoming's participation to the Agricultural and Mines Departments.

Full authority was given Commissioner-in-chief Richardson and Secretary Deming to make all necessary arrangements for exhibits; to expend what money might be necessary in carrying forward the work and to call upon any other members of the Commission for whatever assistance was needed.

Under the act creating the Commission permission was given to use as much of the exhibit from the Louisiana Purchase Exposition as should be available and to replenish the same with such new material as might be deemed necessary.

The Secretary was instructed to request donations from the Northwestern Railroad Company, the Burlington Railroad Company and the Union Pacific Railroad Company.

Mr. Buffum was authorized to take steps to renew and reinforce the agricultural exhibit; Mr. Baird was instructed to solicit suitable exhibits from Northeastern and Northern Wyoming, and Mr. Pexton was made a committee of one to confer with the coal companies of Kemmerer and Diamondville, with regard to making special exhibits of their products at the Lewis and Clark Exposition.

#### APRIL MEETING OF THE COMMISSION.

On April 11, 1905, a second meeting of the Commission was held. A communication was read from the Burlington Railroad in response to a request for a cash donation, in which said railroad stated that while it could not make a donation, the Burlington would assist the Commission in other ways, particularly in the matter of the transportation of exhibits to and from different parts of the State, and the promise was faithfully carried out.

President Marvin Hughitt of the Northwestern Railroad Com-

pany responded that his railroad would be pleased to make a cash donation of \$2,500. The generous favor of the Northwestern Railroad was gratefully acknowledged and President Hughitt was requested to remit the \$2,500 to Governor Brooks, President of the Commission, which was promptly done in April, 1905.

The Union Pacific Railroad Company made no definite response at that time but later agreed to make a cash donation equivalent to the amount paid that railroad for the transportation of exhibits to and from the Portland Exposition, and on December 15th forwarded to the Secretary of the Commission a draft for \$746.25. This draft was turned over to State Treasurer Irvine and stands as a credit in the general fund of the State.

#### PREPARING FOR PORTLAND.

The Commission met on April 13th with all members present, to-wit: President B. B. Brooks; Vice President George E. Pexton, Commissioner-in-chief Clarence B. Richardson, Secretary W. C. Deming, Hon. J. L. Baird, Hon. B. C. Buffum.

Mr. Charles Camp appeared before the Commission and presented a proposition for giving an illustrated stereopticon and moving picture demonstration of Wyoming scenery and Wyoming industries at the Portland Exposition. The proposition was discussed at length and Messrs. Richardson, Buffum and Deming were made a committee to perfect arrangements with Mr. Camp or some other competent person for an illustrated lecture and moving picture show along the lines submitted in Mr. Camp's proposition. The Commission limited the total expense of such a feature during the Exposition at not to exceed \$2,500, the amount of the donation of the Northwestern Railroad.

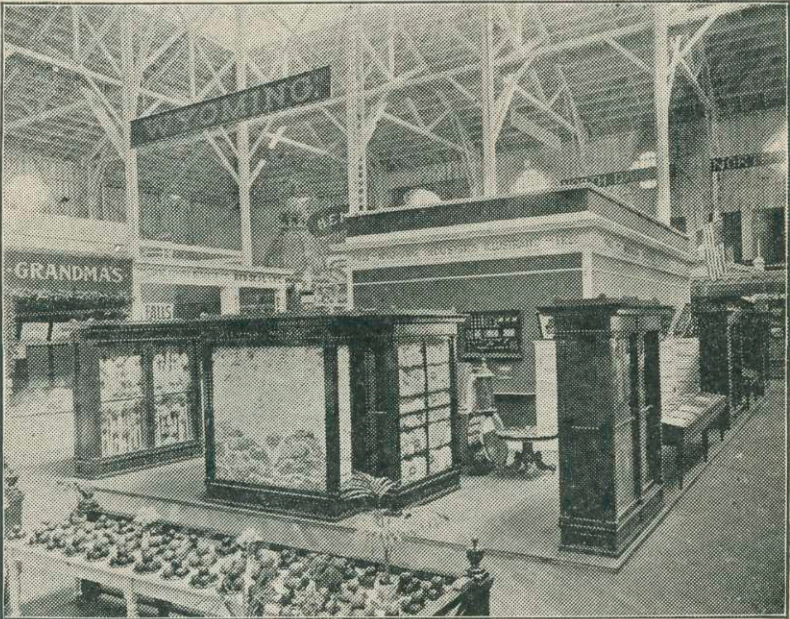
On motion of Mr. J. L. Baird \$500 was appropriated for literature and advertising purposes, it being the sense of the meeting that two or three thousand extra copies of the State book "Wyoming" should be secured for distribution along with other literature on various subjects of State interest.

Monday, July 10th, was selected as Wyoming day at the Lewis and Clark Exposition, this date being commemorative of the fifteenth anniversary of Wyoming's Statehood.

Rev. H. C. Dunsmore of Grand Encampment was selected as Custodian of Exhibits at a salary of \$100 per month and transportation to and from Portland.

ARRANGE FOR BIOGRAPH EXHIBIT.

After communicating with and interviewing various parties offering to prepare an illustrated lecture and moving picture exhibit, and having witnessed a very satisfactory demonstration by Mr. Charles Camp, the Committee entered into a contract with Mr. Camp for such an illustrated lecture and biograph entertainment. Arrangements were immediately made with State



VIEW OF WYOMING'S AGRICULTURAL EXHIBIT

Engineer Johnston, Photographer J. E. Stimson, and others, to supply a valuable collection of Wyoming scenes and industries, which together with those previously made by Mr. Camp himself and Mr. B. C. Buffum, formed the largest and best collection of Wyoming views ever gotten together. Special attention was devoted to Northern and Central Wyoming and the Shoshone Reservation.

The Commission takes this opportunity to acknowledge the hearty co-operation on the part of State Engineer Johnston, whose fine collection of Wyoming views added no small part to

the subsequent success of Mr. Camp's exhibition at Portland under the auspices of the Wyoming Commission.

The various committees having performed their work promptly, Messrs. Richardson, Buffum and Deming proceeded to Portland in May and completed all arrangements for Wyoming exhibits in the Mines and Agricultural Departments. The Commission was particularly fortunate in both location and size of space secured. No participating State was more prominent and we believe we can say with becoming modesty that no State made a better showing.

The Exposition opened June 1st, 1905, and Wyoming's exhibits were complete upon the opening day.

#### LARGE ATTENDANCE FROM WYOMING.

Wyoming people seemed to feel that the Lewis and Clark Exposition was in a manner their own show, and the records of the railroad companies and the registration books at the Wyoming Headquarters indicated that about 2,500 Wyoming people attended the Portland Exposition.

#### THE COMMISSION AT PORTLAND.

A regular meeting of the Wyoming Commission was held July 10, 1905, at the Wyoming Headquarters, Mines Building, Exposition Grounds, Portland, Oregon. There were present President B. B. Brooks, Commissioner-in-chief C. B. Richardson, and Prof. B. C. Buffum. Mr. Richardson was authorized to purchase or rent a piano and have the same installed in the pavilion of the Wyoming space, Agricultural Building, and also to employ an orchestra to play each day in connection with the Wyoming moving picture show. A fine Knabe piano was subsequently purchased and is now in use at the Executive Mansion in Cheyenne. Five entertainments were given each day and large crowds filled the little theatre at every performance, showing great interest and enthusiasm over the lecture and the splendid pictures thrown on the large canvas.

The exhibits in both the Agricultural and Mining Building were closely inspected by the members of the Commission and the work done under the direction of Commissioner-in-chief C. B. Richardson, Secretary W. C. Deming and Prof. B. C. Buffum was approved by the Commission.

WYOMING DAY CEREMONIES.

Wyoming Day was celebrated at the Lewis and Clark Centennial Exposition July 10th. In many respects it was the most successful State Day observed at the Exposition. Governor Bryant B. Brooks, with his entire Staff, members of the Wyoming Commission, and a large number of Wyoming people, as well as several hundred visitors from other sections participated in the occasion.

The formal exercises were held in the Auditorium on the Exposition Grounds at ten thirty a. m. The program was as follows:

Music by Exposition Band.

Address of Welcome, by Hon. H. W. Goode, President of the Lewis and Clark Exposition.

Response by Hon. C. B. Richardson, Commissioner-in-chief of the Wyoming Commission.

Address by Hon. Harry Lane, Mayor of Portland.

Music.

Address on "Wyoming" by Hon. Bryant B. Brooks, Governor of Wyoming.

Song "WYOMING" by Quartet; words by C. E. Winter, music by E. A. Clemmons.

Address by Judge J. A. Van Orsdel of the Wyoming Supreme Court, Subject, "Social and Legal Conditions in Wyoming."

Music by Band.

A reception was held at the American Inn from nine to eleven p. m. in honor of Governor B. B. Brooks. The reception was largely attended by State and Foreign Commissioners, the Exposition officials and prominent citizens of Portland, and was one of the social events of the Exposition.

The speeches of Governor Brooks and Attorney General Van Orsdel on Wyoming were given wide publicity through the press and many thousand copies were distributed in pamphlet form.

INTEREST CONTINUES TO GROW.

Each month of the Exposition showed an increasing attendance, and the results obtained by Wyoming were correspondingly great. Messrs. Dunsmore and Camp were asked many times a day for information and literature and the Commission finds



that both gentlemen performed their duties conscientiously and well.

#### THE MINING EXHIBIT.

In the Mines Building Wyoming occupied 3,000 square feet of floor space and 1,700 square feet of wall space. While very compact, Wyoming's exhibit in the Mines Building was varied and attractive. It embraced mammoth specimens of coal from



VIEW OF WYOMING'S MINES EXHIBIT

Kemmerer, Diamondville, Cumberland and Rock Springs, and these were by far the most imposing of any shown at the Fair. The oil exhibit was without a peer, while the soda, copper, iron, gold, building stone, onyx, clays, asbestos, fossil fish, moss agates, petrified woods, stalactites and many semi-precious stones, combined to make the best general exhibit in the building.

#### THE AGRICULTURAL EXHIBIT.

The Agricultural exhibit was equally complete. In this building Wyoming was in competition with some of the greatest

agricultural States in the Union, and the large number of awards received prove very conclusively that our State did not suffer by comparison. In this handsome building Wyoming occupied 3,200 square feet of floor space and 2,250 square feet of wall space. This exhibit was installed under the personal direction of Prof. Buffum, and consisted of about 1,200 classified exhibits. The handsome cabinets of Wyoming grasses and grains in the sheaf, the great pyramids of cereals in symmetrical glass jars, the splendid showing of scoured wool and native fleeces, the large collection of Wyoming woods, the unexpected varieties of fruits, the beautiful Wyoming pictures which adorned the walls, together with the attractive little theatre occupying the centre of the space in which were given five daily shows and lectures, all largely attended, created a scene of which every Wyoming visitor was proud.

#### WOOL WINS MEDALS.

The wool exhibit was one of the most complete shown at the Fair and consisted largely of range grown wools. The higher grade wools exhibited by F. S. King and Brothers of Laramie were superior to any other exhibit, and this firm was awarded four gold medals on their various exhibits. The range grown wool of the Platte Valley Sheep Company of Douglas, Wyoming, was also awarded a gold medal, and many other exhibitors received awards.

#### MANY CALLS FOR LITERATURE.

Many thousand pamphlets touching Wyoming industries and a large number of copies of the book "Wyoming" were distributed during the Exposition. The registry books in the two exhibits showed the names of people from all over the United States and Canada. An unusually large number left requests for literature, all of which was duly mailed to their addresses.

#### WYOMING WINS MANY AWARDS.

Wyoming exhibitors received 196 awards, 93 being gold medals, a larger percentage, considering exhibits entered, than was received by any other State or Territory at the Portland Exposition.

GREAT VARIETY OF PICTURES.

The extent and variety of the advertising received by Wyoming in the stereopticon lecture and moving picture show will be better appreciated when it is understood that 2,000 different slides were used. About 265 were shown each day accompanied by an appropriate lecture.

TESTIMONIAL FROM PRESIDENT GOODE.

The following from President Goode of the Exposition shows the prominent part Wyoming played and the attention the above interesting feature attracted.

PRESIDENT'S OFFICE.

H. W. GOODE, President.  
HENRY E. REED, Secretary.

PORTLAND, OREGON, Oct. 19, 1905.

MR. CHAS. CAMP,  
Wyoming Agricultural Exhibit,  
Lewis and Clark Centennial Exposition,  
Portland, Oregon.

DEAR SIR:—

Your part of Wyoming's Agricultural Exhibit at this Fair is worthy of more than passing notice. The subject of irrigation is now National in its scope; and your motion pictures, showing the actual application of the water by the farmers to the growing potatoes, onions, and sugar beets, and your description of the same, give a definite idea of that subject that no mere words can convey, and your "Camp's Wyoming Round-up" is historical, instructive and entertaining.

The Exposition has awarded you for the State of Wyoming a gold medal, and personally I desire to congratulate you for your work here.

Yours very truly,

H. W. GOODE, President.

CLOSING DAYS OF THE FAIR.

Commissioner-in-chief Richardson and Secretary Deming went to Portland in October and closed up Wyoming's affairs at the Exposition. All exhibits owned by individuals and not contributed to the State Museum were returned to the owners. Exhibits from the State University were returned to that institution, the exhibits borrowed from the museum at the State Capitol in Cheyenne have been duly re-installed there together with

much new and valuable material. The Commission realizing that there would be a large overflow of exhibits more than sufficient to replenish the museums at the Capitol and other State institutions, and desiring to perpetuate the exhibit if possible without additional expense to the State, submitted the following proposition to the Cheyenne Board of Trade.

PORTLAND, OREGON, Oct. 5, 1905.

HON. A. D. KELLEY,  
President of Board of Trade,  
Cheyenne, Wyoming.

DEAR SIR:—

At the close of the Lewis and Clark Exposition the Wyoming Commission will proceed at once to wind up its affairs and make final report of its work.

After returning all exhibits borrowed from State institutions and individuals and replenishing the State Capitol Museum, and the Museum at the State university to their present capacity, there will remain a large variety of mineral and agricultural specimens, together with suitable cabinets, cases and labels, most of which will have to be stored away indefinitely, possibly to be lost and destroyed through lack of attention.

There is also a certain class of exhibits more or less perishable which it would not be advisable for this Commission to ship home unless it is definitely known that they are to be put to some good use and properly cared for, to the end that the State may directly or indirectly profit thereby. Notable among this class is the comprehensive oil exhibit, containing several hundred varieties in glass jars, all labelled, together with an extensive cabinet, collected and arranged at large expense, and which have been and still can be made a splendid advertisement for the oil districts of Wyoming and for the entire State. This cabinet and collection of oils are too large to be placed in the State capitol, although this Commission intends to fit up a series of smaller cases for the State museum, showing all the varieties of oils exhibited at the Fair.

There is also a great abundance of fine grains in the sheaf and in jars, together with grasses, etc., more than can be used in the State institutions. It has taken this Commission three years to make the collections for two Expositions, and these exhibits have won many prizes for the State. The collection has cost several thousand dollars, and it seems a waste of energy and money that any part of it should be dissipated and destroyed, as such things usually are after they have served their original purpose.

The Commission therefore proposes that if the Cheyenne Board of Trade or any party of responsible citizens representing the city or State will supply a suitable room and agree to properly care for the same when the exhibit is installed, that

the Commission will loan such surplus collection of mineral and agricultural exhibits and cases to said Board of Trade or said citizens until the State of Wyoming, through the next Legislature, or any subsequent Legislature, shall see fit to make other distribution of the collection.

In this way after restoring and reinforcing exhibits at the principal State institutions to their full capacity, this surplus would be not only an effective advertisement for the State of Wyoming, but would be held in trust for any future Expositions, should the State desire to use it. Citizens from all over Wyo-



WYOMING EXHIBIT IN THE MINES BUILDING

ming have expressed a desire to see the entire exhibit preserved in some manner, if it is practicable to do so. Considering the short time at our disposal, this seems to us the only practical method of reaching this end. It would preserve much valuable property that would otherwise be lost to the State.

As the powers of this Commission are limited as to the future disposition and care for this exhibit, and the affairs of the Commission must be closed up within a reasonable length of time, we make this suggestion and await an early response.

Very truly,

C. B. RICHARDSON,  
*Commissioner-in-chief.*

W. C. DEMING, *Secretary.*

The Cheyenne Board of Trade thereupon agreed to maintain the said exhibit, and a suitable room on Ferguson street was secured. The exhibit has been duly installed and turned over to the Cheyenne Board of Trade, for which the Secretary holds the following receipt.

BOARD OF TRADE RECEIPT.

THIS IS TO CERTIFY:—

That I, as President of the Cheyenne Board of Trade, have this date received from C. B. Richardson and W. C. Deming, Commissioner-in-chief and Secretary respectively of the Wyoming Commission of the Lewis and Clark Exposition, certain exhibits, consisting of Cereals, Grasses, Wool, Copper, Iron, Soda, Oil, Cabinets, Cases, Glass Jars, Wood, etc., etc., belonging to the State of Wyoming, and now housed and on exhibition at No. 1707 Ferguson Street, Cheyenne, Wyoming, and that the same will be properly cared for and kept open to the public until the Wyoming Legislature which meets in 1907, makes other disposition of the same. Should the Legislature fail to provide for the continuation of this exhibit and the Board of Trade not desire to continue the care of the same, the entire exhibit will be turned over to the Wyoming Capitol Commission.

A. D. KELLEY,  
*President Cheyenne Board of Trade.*

SACAJAWEA'S GRAVE---A SUGGESTION.

History records that Lewis and Clark were greatly assisted in their perilous trip over the plains, across rivers and mountains, by a Shoshone Indian maiden named Sacajawea. In fact, so important was the part played by this now far-famed Indian girl, who showed qualities of heroism and loyalty almost unmatched in history, that the management of the Lewis and Clark Exposition erected a splendid memorial in her honor on the Exposition Grounds and gave her an important place in the commemorative features of the Exposition.

It has been claimed that Sacajawea was buried somewhere on the Shoshone reservation in the State of Wyoming, and those most interested in the great Lewis and Clark Exposition are making an effort to authenticate this belief.

Among those who are giving considerable attention to this historical incident are Mrs. Eva Dye, author of "The Conquest" and official historian of the Lewis and Clark Exposition, and also Miss Grace Raymond Hebard of the University of Wyoming. If the fact can be reliably established that the remains of Sacajawea

jawea, who acted as a guide for thousands of miles for Lewis and Clark, lie buried in Wyoming, it should be done as soon as possible.

This Commission therefore recommends that the next Legislature take the necessary steps to locate the grave of Sacajawea and that the Legislature make an appropriation for a suitable tablet or monument to mark her last resting place.

MANY COURTESIES RECEIVED.

The Wyoming Commission was treated with uniform courtesy throughout the entire Exposition, and the part played by this State was much appreciated by the Exposition management and the people of Portland. The Commission acknowledges many kindnesses and courtesies from President H. W. Goode, Director of Exhibits H. E. Dosch, Hon. Jefferson Myers, President of the Oregon State Commission, Dr. David T. Day, Chief of the Department of Mines, Henry E. Reed, Secretary, H. B. Hardt, Supt. of Exhibits, and Theodore Hardee, Assistant to the President.

## Awards to Wyoming Exhibitors

### GOLD MEDALS

Frank Mann	Oats and wheat
J. F. Lewis	Wheat, oats, barley and rye
Chas. Hyer	Marion wheat
Chas. Griffin	White oats
E. B. Fawcett	Wheat
W. C. Dinwiddie	Alfalfa
Edward Young	Wheat, grass and barley as per entry
Geo. Teeples	Alfalfa
A. Nelson	Grasses
Mrs. C. J. Simmons	Collective exhibit as per entry
E. Nelson	Millet and grasses
J. F. Lewis	Collective exhibit as per entry
W. E. Keys	Oats
Chas. Freel	Oats
J. E. Strong	Wheat
E. B. Fawcett	Oats
Chas. Hart	Highland Chief barley
Geo. S. Martin	Big Four oats, Spring Marvel wheat
Wyoming Experiment Station	Collective exhibit as per entry
John Wymer	Twentieth Century Wonder oats
Edward Farthing	White and Harper oats, white touse wheat
Bert Williams	Spelt
Crook County	Japanese buckwheat, Polish wheat
Geo. Howell	Wheat
Nathan Mortenson	Defiance and Oregon white wheat
E. W. Allred	Wheat
L. A. K. Ranche	Alfalfa seed
Geo. F. Martinson	Oregon white wheat
Frank Nichol	Red and touse wheat

Albany County .....	Collective exhibit as per entry, oats, flax, rye, barley, wheat, meadow grass
Carbon County .....	Turkey red wheat
Fremont County .....	Oats, wheat and barley
Sheridan County .....	Wheat, corn, beans, peas, millet, barley, oats
Johnson County .....	Oats, barley and wheat
Wm. Kusel .....	Wyoming amber, Saskatchewan Fife wheat, Four-rowed barley, Silver Mine oats
Peter Watt .....	White oats
Chas. E. Buell .....	White oats
James Cowley .....	Buckwheat
John McCune .....	White oats
Laramie County .....	Collective exhibit as per entry
C. A. Durfee .....	Wheat
E. J. Bell .....	White oats, Hulless and Brewing barley
Wyoming Experiment Station	Collection of wheat as entered
Wm. Ayers .....	Oats, winter wheat
James Murray .....	Wyoming Wonder wheat
John H. Gordon .....	Wheat
Reich Bros. ....	Blout's No. 16 wheat
John McCormick .....	Polish wheat, Two-rowed barley
David Lewis .....	Wheat
R. Williams .....	Polish wheat
Chas Howell .....	Wheat and rye
Miller & Sons .....	White Russian wheat
Dickinson .....	Red chaff wheat
Spencer .....	Alfalfa seed
H. Hartenson .....	Welcome oats, Oregon white wheat
J. E. Strong .....	White oats
Prof. B. C. Buffum .....	General installation of Wyoming's Agricultural Exhibit
Nels Lambertson .....	Hulless barley
J. M. Carey & Bro. ....	Spelt seed, oats, wheat, rye, alfalfa seed
John McLaughlin .....	Brome grass
J. R. Painter .....	Hulless barley, oats
Big Horn County .....	Buckwheat, wheat 3
Wyoming Experiment Station	Exhibit of barley
Wyoming Experiment Station	Collective exhibit of oats
Geo. Geiger .....	White oats
Johnson County .....	White oats
S. C. Elliott .....	Oats
State of Wyoming .....	Wool
Platte Valley Sheep Co. ....	Scoured range wool
James F. Howell .....	Wool
F. S. King Bros. ....	Wool
King Bros. Co. ....	Wool collective exhibit
F. S. King Bros. Co. ....	Two Merino ewe fleeces
F. S. King Bros. Co. ....	Wool
John H. Gordon .....	Collection of Wyoming wools as per entry
Wheatland Roller Mills .....	Golden Grain flour and Antelope flour
Buffalo Mfg. Co. ....	Buffalo straight flour, fancy patent flour
Wyoming Comm. L. & C. Ex.	Installation of Agricultural Exhibit
Ed. Moore .....	Automatic wagon brake
Chas. Camp for State of Wyo.	Camp's Wyoming Round-up
Hecla Mining and Milling Co.	Collection as per entry
State of Wyoming .....	Collection as per entry
State of Wyoming .....	Onyx mantel

#### SILVER MEDALS

Battle Lake Tunnel Site	
Mining Co. ....	Copper ores
Penn. Wyo. Copper Co. ....	Copper ores



State of Wyoming	Collective exhibit crude and refined oils
State of Wyoming	Natural soda from natural soda lakes
Albany County	Natural soda
Diamondville Coal Co.	Two large blocks of coal
Union Pacific Coal Co.	Coal
Colorado Fuel & Iron Co.	Mineral paints, iron ore
Kemmerer Coal Co.	Coal
Cambria Coal & Coke Co.	Coal
J. J. Hauphoff	Onyx
J. A. Lobell	Oils
Wyoming Experiment Station	Broom corn, Royal Archangel and Welcome oats, red May winter wheat
C. W. Getty	Angora wool.
R. M. Phillmery	Saskatchewan wheat
John Hines	Oats
Curtis Elliott	Oats
Montreif Bros.	Scotch Fife wheat
Hugo Koch	Burpee's Bliss' Ever-bearing pea
Wyo. Development Company	Saskatchewan Fife and Timothy wheat, alfalfa seed, white oats, beans
John Zing	Beans
P. Surrena	Red Mediterranean winter wheat
Wm. Allen	Wheat
G. W. Coots	Wheat
Chas. Freel	Wheat
James F. Howell	Wheat
A. M. Nelson	German millet
David Kidd	Wool, Merino
O' C. Kilkinney	Polish wheat, white oats
University of Wyoming	Wood turning, carpenter work, modeling and work by students
State of Wyoming	Table manufactured from Wyoming woods

#### BRONZE MEDALS

Wyoming Commission	Crude and refined petroleum
Laramie Glass Works	Glass
Converse County	Collection as per entry
Natrona County	Collection as per entry
H. Larsen	Grindstone, sandstone
First National Bank, Cheyenne	Red granite
J. E. Stimson	Photographs of mines and machinery
Lindley & Goodnight	Marble
Pioneer Stone & Marble Co.	Building stone and marble
H. A. Coffeen	Sandstone, granite, marble
Johnson County	Collection as per entry
Carbon County	Collection as per entry
Laramie County	Collection as per entry
Geo. H. Watson	Lithographic stone
A. J. Covington & Bros.	Moss agates
F. M. Foote	Oils
University of Wyoming	Iron work by students of University
M. P. Keefe	Sandstone
Sheridan County	Marble, petrified wood, glass sand
C. A. Guernsey	Mineral paint, iron ore
Wyo. Railway & Iron Co.	Iron ores and steel products
Edwin Moore	Alfalfa, grass and spring rye as per entry
E. W. Whitecomb	Wool
Beckton Stock Farm	Wool, two Rambouillet-Lincoln cross-bred fleeces
Thos. P. Allen	Beans
Fred Newcomer	Black wax beans

Frank Milligan .....	White kidney, red wax, white lima and string beans
Boston & Wyo. Lumber Co. . . . .	Collection of samples of lumber
Sweetwater Brewing Co. ....	Beer
J. A. Fischer .....	Navy, black wax and small pea-beans
J. E. Stimson .....	Tinted photographs of Wyoming scenes
Sweetwater Brewing Co. ....	Wurzbürger beer

### HONORABLE MENTION

Colo. & Wyo. Chemical Co. ....	Soda
G. W. Fox .....	Kaolin
Elk Mountain Mining Co. ....	Copper ore and bornite
Colo. & Wyo. Mining Co. ....	Gold ore
J. J. Covington .....	Onyx
American Oil and Refining Co. ....	Crude and refined oils
Penn Oil & Gas Co. ....	Oils
Sweetwater County .....	Agates, petrified and agatized woods
A. L. Marsh .....	Jet
Mondell & Davis .....	Bentonite
Wm. Taylor .....	Bentonite
Casper Pressed Brick Co. ....	Pressed brick
H. Adams .....	Brick clay
Brenning & Rhoades .....	Brick
Acme Cement Plaster Co. ....	Plaster
Jack Hurley .....	Flint arrow heads
James Ferry .....	Asbestos
Crook County .....	Stream tin
Albert Richards .....	Ore collection
Boston Sierra Madre Mining Company .....	Galena ore
Chas. Fredericks .....	Collection as per entry
Fremont County .....	Collection as per entry
Sam McBride .....	Western wheat grass
Weston County .....	Alfalfa
Richardson Bros. ....	Wool, range grown wool
Painter & Co. ....	Wool

### GOOD BALANCE REMAINS.

The Eighth Wyoming Legislature appropriated \$10,000.00 in addition to the \$5,658.23, the unexpended balance from the Louisiana Purchase Exposition, making a total appropriation for Portland of \$15,658.23.

Of this fund \$10,437.68 has been paid out, leaving a balance in that fund at this time of \$5,220.55.

The Northwestern Railroad Company donated \$2,500.

Of this sum \$2,160.00 has already been paid out on regular vouchers by Governor Brooks, leaving a balance at this date in this fund of \$340.00, and whatever balance remains when all accounts are settled will be turned in to the State Treasury.

The Union Pacific Railroad Company, as hereinbefore mentioned, donated \$746.25, which has been turned over to the State Treasurer and now stands as a credit in the general fund.

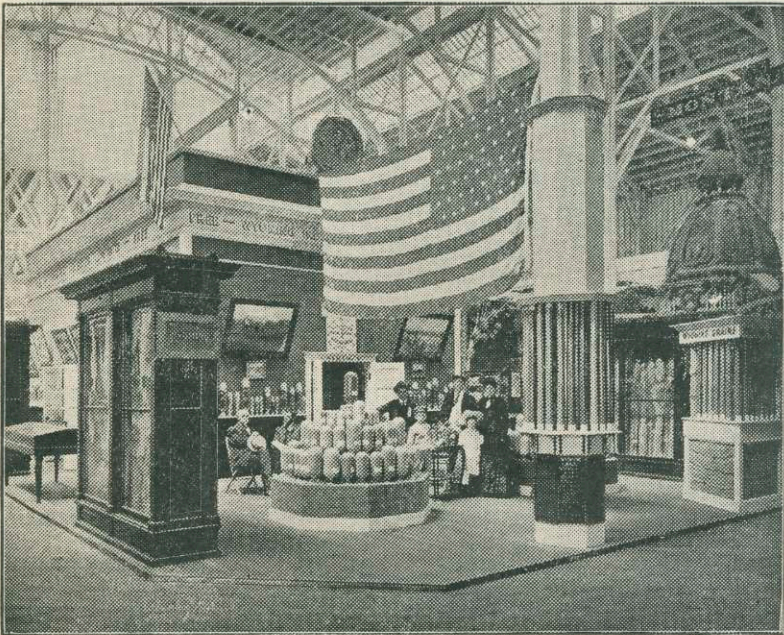
RECAPITULATION

APPROPRIATIONS AND CONTRIBUTIONS.

State Appropriation .....	\$15,658.23	
Northwestern Railway Contribution .....	2,500.00	
Union Pacific Railroad Contribution .....	746.25	
TOTAL .....	\$18,904.48	\$18,904.48

EXPENDITURES AND BALANCES.

Paid out of State Fund .....	\$10,437.68	
Balance in State Fund .....	5,220.55	
Paid out of Northwestern Contribution .....	2,160.00	
Balance in Northwestern Contribution .....	340.00	
Union Pacific Contribution in State Treasury .....	746.25	
TOTAL .....	\$18,904.48	\$18,904.48



WYOMING EXHIBIT IN THE AGRICULTURAL BUILDING

The books of the Secretary of the Commission show a balance at this date from all sources as above indicated of \$6,306.-80.

There are a number of outstanding bills which as yet have not been presented or allowed, but which will be paid in due time, reducing the final balance to the credit of the Lewis and Clark Exposition fund to about \$5,500.00.

In addition thereto The Wyoming Commission has turned over to the State much valuable new property available for future similar exhibits.

C. B. RICHARDSON,  
*Commissioner-in-chief.*

W. C. DEMING,  
*Secretary.*

Attest: BRYANT B. BROOKS,  
GEO. E. PEXTON,  
B. C. BUFFUM,  
J. L. BAIRD.

CHEYENNE, WYO., Jan. 29, 1906.

At a meeting of The Wyoming Commission held this day at the State Capitol, the above excellent report was read, approved, and a thousand copies of same ordered printed in pamphlet form.

BRYANT B. BROOKS,  
*President Commission.*

