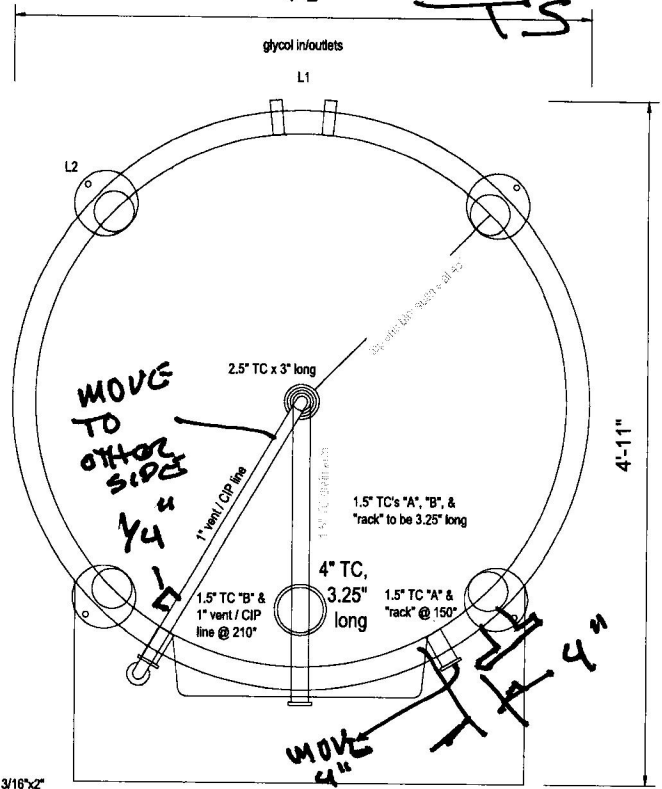
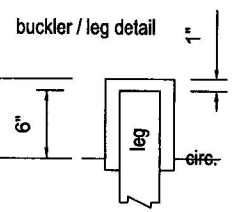
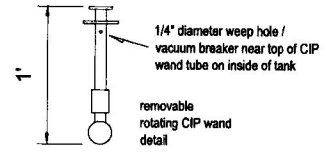


14/15bbl working capacity jacketed FULLY insulated clad custom fermenter for SASQUATCH BREWING  
 17.36bbl gross capacity  
 12ga 304 tank shell, 14ga 304 welded cladding and 1.5" mineral wool insulation top, side, and bottom  
 14.7psi shell rating, 20psi test  
 all seams to be butt joints  
 all seams TIG welded both sides  
 interior seams blended smooth  
 exterior seams ribbon polished  
 one 36" tall full wrap dimpled glycol panel  
 1" female NPT in/outlets  
 14.7psi jacket rating, 45psi test

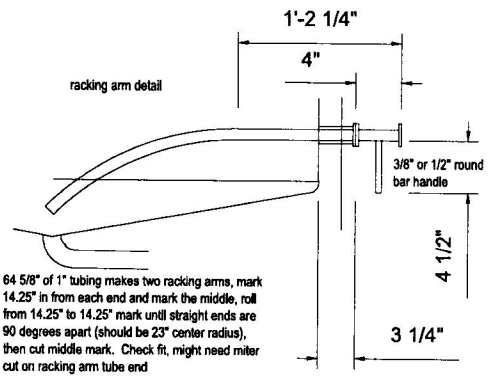
CHARLES 8-28-13



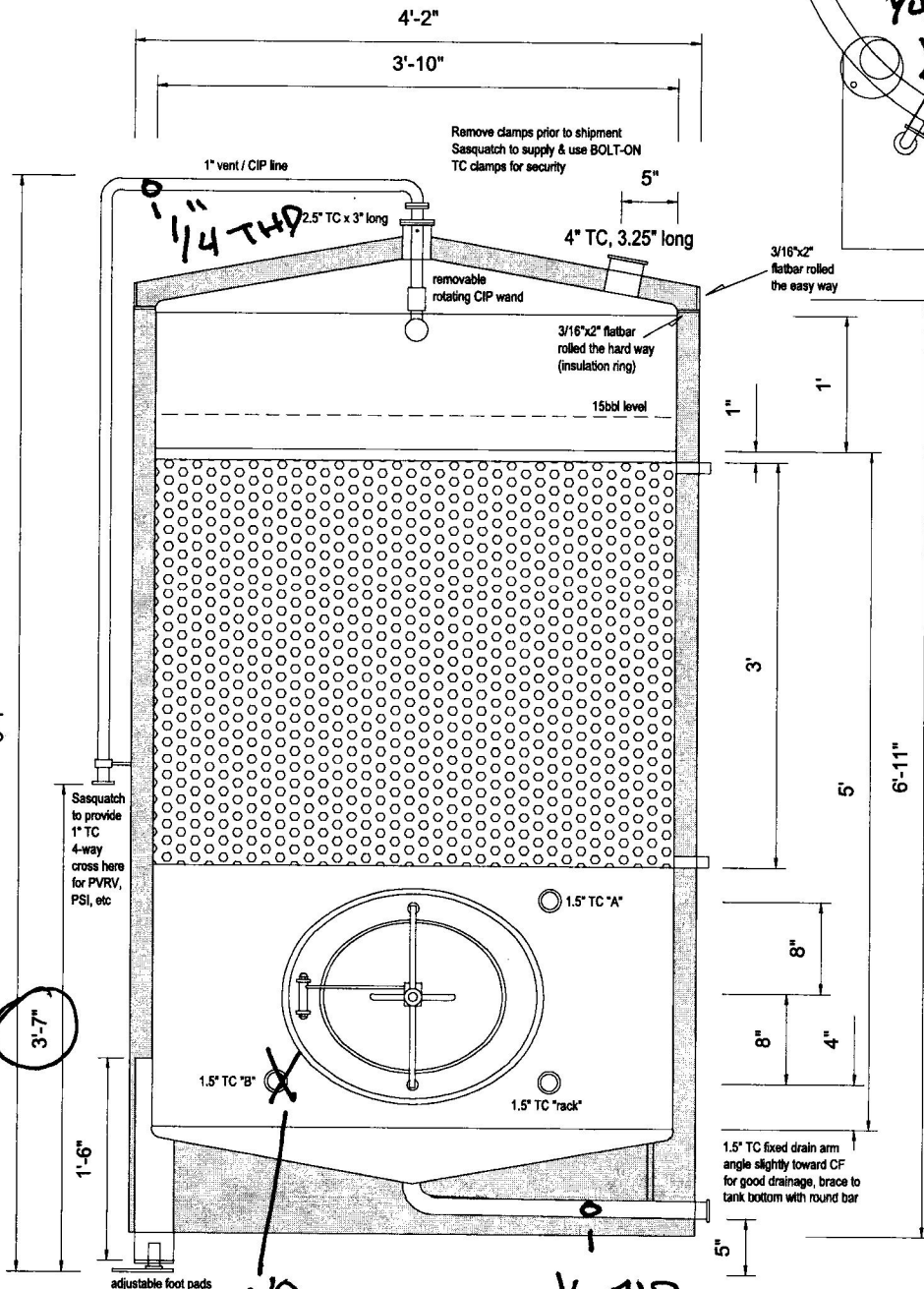
big alcove to cover all fittings, vent line, and manway (notch out for vent / CIP line) 36" wide, 18" deep, 48" tall, with a full sized hinged, lockable door. TBD



build side skin to exactly 6' 11" height, weld top edge directly to face of flatbar rolled easy way



64 5/8" of 1" tubing makes two racking arms, mark 14.25" in from each end and mark the middle, roll from 14.25" to 14.25" mark until straight ends are 90 degrees apart (should be 23" center radius), then cut middle mark. Check fit, might need miter cut on racking arm tube end



32"

NO

1/4 THD SILVER GLASS

Sasquatch to provide 1" TC 4-way cross here for PVRV, PSI, etc

Remove clamps prior to shipment Sasquatch to supply & use BOLT-ON TC clamps for security

adjustable foot pads