

STEERS & COMAN  
Present

# THE AGUILARS

*Spanish Lute Quartet*

Laudin (Small Lute).....Ezequiel Aguilar  
Laudete (Medium Lute).....Pepe Aguilar  
Laud (Original Lute).....Elisa Aguilar  
Laudon (Large Lute).....Paco Aguilar

(Instrumental Ensemble Originated by the Aguilars)

**Auditorium, Monday Evening, February 2, 1931**

## PROGRAM

### I.

- (a) Rondo .....*Couperin*  
Arranged for the Aguilar Quartet by Joaquin Nin
- (b) Sonata in D (18th century) .....*Mateo Albeniz*  
Arranged for the Aguilar Quartet by Joaquin Nin
- (c) Granada {  
(d) Sevilla { From "Suite Espagnole" .....*Isaac Albeniz*  
Arranged for the Aguilar Quartet by J. Turina

### II.

- Serenade (K 525) .....*Mozart*  
March  
Romance  
Minuet  
Rondo

### III.

- (a) Danza de la pastora (Dance of the Shepherdess) .....*E. Halffter*  
Arranged for the Aguilar Quartet by the composer
- (b) La oracion del torero (The Toreador's Prayer) .....*J. Turina*  
Dedicated to the Aguilar Quartet
- (c) Recitado del pescador (The Fisherman's Story) .....*M. de Falla*  
Arranged for the Aguilar Quartet by the composer
- (d) De Murcia .....*Joaquin Nin*  
Dedicated to the Aguilar Quartet

*Lutes from Esteso, Madrid*

Tour Direction: Metropolitan Musical Bureau

## COMING! PAUL ROBESON

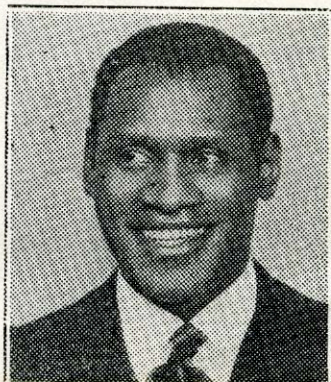
*The Great Negro Baritone*

**AUDITORIUM—MONDAY, FEB. 16**

### PRICES

Floor .....	\$2.50	\$2.00
Dress Circle ...	2.00	1.50
Balcony .....	1.50	1.00

MAIL ORDERS NOW!—Send checks, self-addressed stamped envelopes to STEERS & COMAN, Public Service Building.





Since 1870—

*"Everything Fine  
in Music"*

SHERMAN, CLAY & CO. has pleasure in announcing  
that

MR. SERGE L. HALMAN  
of Aeolian Co., New York

Will Make His Headquarters in Our Store  
Until February Seventh

FOR PRESENTATION OF THE MARVELOUS NEW  
MUSIC CREATION

## *The Concertola Duo-Art*

We extend to you a most cordial invitation  
to spend a pleasant half hour listening to  
this remarkable instrument. . . . Appoint-  
ments gladly made to suit your convenience.

Sherman,  Clay & Co.

ALDER AT WEST PARK

BE. 6261