

STEERS & COMAN

Present

AMELITA GALLI-CURCI

Assisting Artists { MANUEL BERENGUER, flutist.
HOMER SAMUELS, pianist.

Management—EVANS & SALTER, 527 Fifth Ave., New York

Municipal Auditorium

Monday Evening, October 25, 1926

PROGRAM

- I. Star vicino - - - - - (1615-1673) Rosa
Chi vuol la zingarella - - - - - (1741-1816) Paisiello
- II. Recit. e romanza, from "Dinorah" - - - - - Meyerbeer
- III. The Gipsy and the Bird (with flute) - - - - - (1804-1885) Benedict
- IV. Dein blaues Auge - - - - - Brahms
No quiero casarme - - - - - Spanish Folk-Song
Tes yeux - - - - - Rabey
*Polonaise, from "Mignon" - - - - - Thomas

INTERMISSION

- V. Prelude eccentric - - - - - Debussy
Reverie - - - - - Debussy
Golliwogg's Cake-Walk - - - - - Debussy

MR. SAMUELS

- VI. Pierrot - - - - - Samuels
Deep in my Heart a Lute - - - - - Alyward
The second Minuet - - - - - Besly
- VII. *Tema e variazioni (with flute) - - - - - (1809-1878) Proch

*VICTOR RECORDS

STEINWAY PIANO

Inquire Music Room, Public Library, for numbers on this program

COMING — AUDITORIUM — NOV. 8
Mischa Elman String Quartet

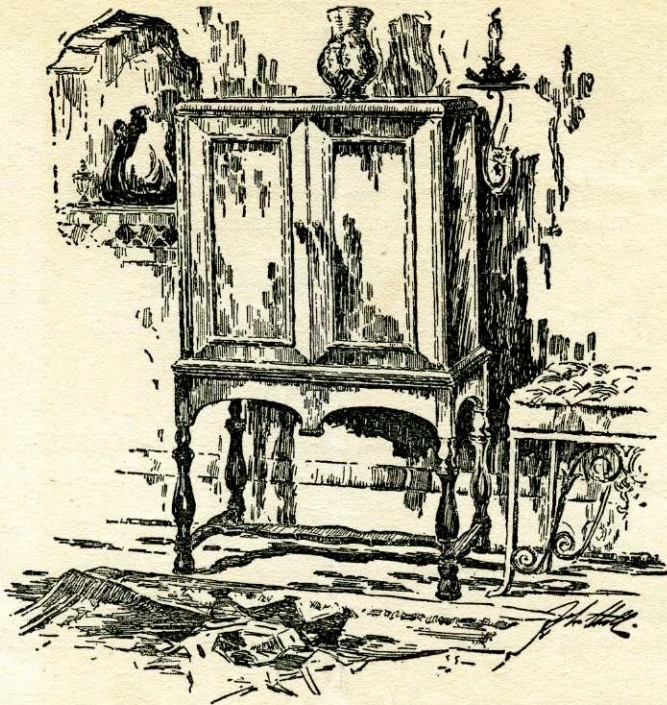
SECOND CONCERT OF THE SERIES

PRICES—Including Tax—50c, \$1.10, \$1.65, \$2.20

MAIL ORDERS NOW

Send Mail Orders now, accompanied by check, self-addressed stamped envelope,
to Steers & Coman, Columbia Bldg.

OVER



The Victor Electrola

An unanimous consensus of opinion is expressed by the great *Victor* Artists that the entire combination of VICTOR RECORDS, NEEDLES, and ORTHOPHONIC or ELECTROLA VICTROLAS is necessary for a true reproduction of their art; that even a partial divorce from this ensemble minimizes the effect.

Your consideration of the new ORTHOPHONIC AND ELECTROLA VICTROLAS is particularly invited, while the memory of Galli-Curci's inspiring voice still lives with you.

We suggest for your enjoyment: "Hamlet"—Mad Scene—Parts 1 and 2
"Star of the North"
"Serenata"
"La Capinera" (The Wren)

Sherman,  Clay & Co.

SIXTH AND MORRISON