

**STEERS & COMAN**

Present

**THE  
BARRÈRE LITTLE SYMPHONY**

GEORGE BARRÈRE—*Founder and Conductor*

IN JOINT RECITAL WITH

**CLAIRE DUX**

*Soprano*

*Municipal Auditorium—Thursday Evening, April 29, 1926*

**PROGRAMME**

- I. Symphony No. 81 in G Major (The Hen) . . . . . *Haydn*  
Allegro Spiritoso—Andante—Menuetto—Vivace  
THE LITTLE SYMPHONY
- II. (a) *Ridente la Calma* . . . . . *Mozart*  
(b) *Preghiere* . . . . . *Cordigiani*  
(c) *Les Belles Manières* (18th Century Folk Song) . *Arr. by Deems Taylor*  
MISS DUX
- III. *Divertissement* . . . . . *Lalo*  
Allegretto—Aubades—Vivace  
THE LITTLE SYMPHONY
- IV. *The White Peacock* . . . . . *Griffes*  
THE LITTLE SYMPHONY
- V. (a) *Mondnacht* . . . . . *Schumann*  
(b) *Schlaflied* . . . . . *Schubert*  
(c) *Irmelin Rose* . . . . . *E. Wolff*  
(d) *Maria's Wiegenlied* . . . . . *M. Reger*  
MISS DUX
- VI. *Dances from "Iphigenie" and "Armide"* . . . . . *Gluck*  
Air—Tambourin—Danse des Athletes—Gavotte  
THE LITTLE SYMPHONY
- VII. (a) *I wonder* . . . . . *Beatr. Fenner*  
(b) *I would weave a song* . . . . . *O'Hara*  
(c) *Little Star* . . . . . *La Forge*  
(d) *Pipers of Love* . . . . . *M. Carew*  
MISS DUX
- VIII. **FOR MY LITTLE FRIENDS** . . . . . *G. Pierne*  
Pastorale (wind instruments)  
March of the Little Tin Soldiers  
The Vigil of the Guardian Angel (string instruments)  
Farandole  
THE LITTLE SYMPHONY

*(The Steinway is the Official Piano of The Little Symphony Orchestra)*

**To Season Ticket Holders:**

If you have not renewed your season ticket reservations for next season, please do so before May 15th.

New season reservations will be filled after May 15th.

**[OVER]**

The Northwest's Most Sensational Season.  
1926-1927

# Steers & Coman

ANNOUNCE

## EIGHT GREAT ATTRACTIONS

26th Annual Series

SEASON TICKETS — \$3.00 - \$5.00 - \$8.80 - \$11.00 - \$13.20  
INCLUDING TAX



AMELITA

# GALLI-CURCI

THE WORLD'S GREATEST COLORATURA SOPRANO  
—AND ONE OF THE SUPER-DRAWING CARDS OF THE YEAR

Assisting Artists

Manuel Beranguer, Flutist

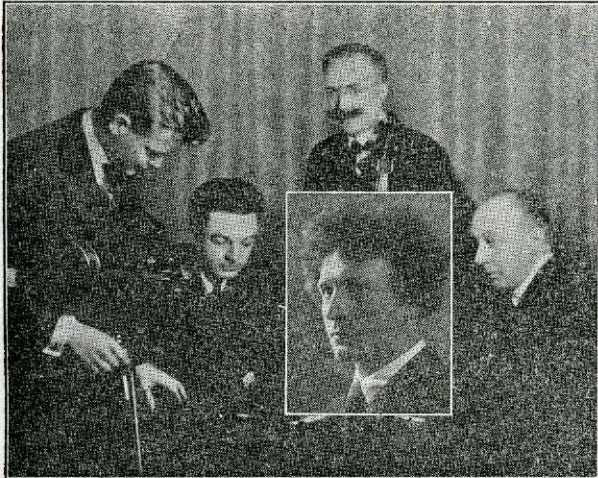
Homer Samuels, Pianist

STEINWAY PIANO

# The Russian Symphonic Choir

BASILE KIBALCHICH . . . Director

In extensive repertory—from rich choral music of the Church thru classic and romantic periods to the haunting folk songs of tragic Russia.  
A splendid group of 24 artists, in picturesque Russian Costumes.



# Percy Grainger

Piano Genius

STEINWAY PIANO — DUO-ART ROLLS

In Joint Program with—

# The New York String Quartette