

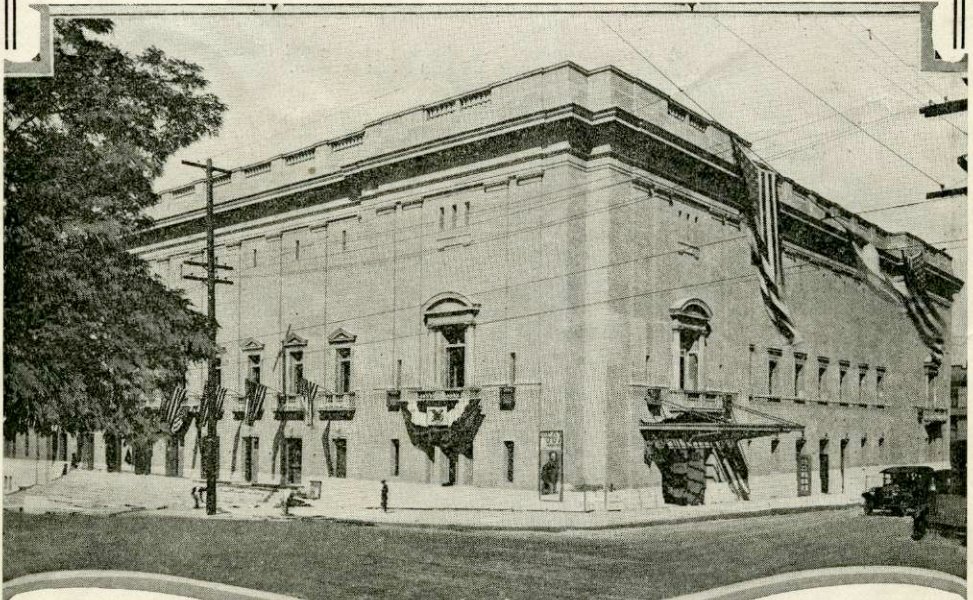
Program

GRAND ORGAN RECITALS

*Dedicating
New Auditorium Pipe Organ*

PORTLAND, OREGON

SEPTEMBER 6, 7, 8 AND 9, 1917



GEORGE L. BAKER, *Mayor*

The Auditorium was constructed and the Organ selected under the administration of
MAYOR H. R. ALBEE

GEORGE L. BAKER W. L. BREWSTER C. A. BIGELOW W. H. DALY

Eight months were spent by Geo. L. Baker, then Commissioner Public Affairs, carefully investigating Organ Builders, with the result that The Ernest M. Skinner Co. of Boston, Mass., was selected.

Program Committee

JAMES A. BAMFORD, *Chairman*
WILLIAM R. BOONE LUCIEN E. BECKER EDGAR E. COURSEN F. W. GOODRICH

Organists

WILLIAM E. ZEUCH, *Concert Organist*
WILLIAM R. BOONE LUCIEN E. BECKER, F.A.G.O. F. W. GOODRICH
EDGAR E. COURSEN J. R. HUTCHINSON FRANCIS RICHTER

Thursday Evening, 8:15 P.M., September 6, 1917

WILLIAM R. BOONE

ORGANIST FIRST CHURCH OF CHRIST, SCIENTIST

- 1 Fantasie-Overture *Herbert A. Fricker*

A brilliant concert number by a distinguished English composer-organist, residing in Toronto, Canada, which effectively displays the orchestral stops of the organ, such as the Tubas, Strings, Flute, Clarinet and French Horn.

- 2 Meditation *Edward J. Sturges*

This beautiful Berceuse contains solos for Fluegel Horn, French Horn, Celesta, Vox Humana and Flute Obligato.

- 3 Allegro Con Moto, from Sonata in A Minor *George E. Whiting*

A stirring number from the pen of a noted Boston organist. It contains an unusual Pedal cadenza.

- 4 Ronde d'Amour *Westerhout*

- 5 Marche Militaire *Schubert*

EDGAR E. COURSEN

ORGANIST FIRST PRESBYTERIAN CHURCH

- 1 Prayer and Cradle Song *Guilmant*

Guilmant, up to the time of his death a few years ago, was considered the greatest modern organist. This Cradle Song is one of the most beautiful of his many compositions.

- 2 War March of the Priests from Athalia *Mendelssohn*

This celebrated march is one of the half dozen great marches of classic musical literature. In dignity and breadth it is surpassed by none.

- 3 Andantino in D Flat *Lemare*

The English organist, Edwin H. Lemare, is at present, municipal organist of San Francisco and is the greatest living organist. The "Andantino" is his most popular composition.

Thursday Evening—continued

- 4 The Answer *Wolstenholme*

A companion piece to "The Question," by the same writer. A cleverly conceived double melody—the Trio in the minor key serves as an effective contrast to the re-entrance of the original melody.

- 5 Evensong *Johnston*

"And far away through the arches dim
A sad, sweet melody,
Like the wind as it waits its evening hymn
Over the rustling sea,
Rises now like a bird on the wing,
Now sinks to an amorous murmuring."

LUCIEN E. BECKER, F. A. G. O.
ORGANIST TRINITY EPISCOPAL CHURCH

- 1 American Fantasia *L. E. Becker*

Some of the most interesting and pleasing of our American melodies have been arranged and elaborated by Mr. Becker to show the tone qualities of the organ, from the softest whisper of the Vox Humana to the strongest tone combination of the full organ. This piece was arranged for the great pipe organ at the St. Louis World's Fair and played there for the first time.

- 2 Overture "William Tell" *G. Rossini*

A standard concert overture. It gives the player a chance to demonstrate the orchestral stops of the pipe organ. Oboe, Clarinet, Flute and Trombone stops will be much in evidence. The character of the composition is brilliant and very melodious.

- 3 a Marche Funebre *Frederic Chopin*

The majestic character of this number is particularly well brought out on the pipe organ. There is plenty of opportunity for effective registration and the sorrowful wail of the soft part of the Funeral March is in fine contrast to the gloomy and imposing first section.

- b Intermezzo *Allan Macbeth*

A very clever piece by a Scotch writer. It is dainty and requires a quick responsive action to bring out its full value.

- 4 Grand March from Tannhauser *Richard Wagner*

Hector Berlioz, the great French composer and critic said of this piece: "One does not need to be told that this Grand March pictures the assembling of proud and chivalrous noblemen, the composition tells its own tale in musical language." On the organ it makes a fine number, the Trumpets and other reed stops of the instrument being much used.

Friday Evening, 8:15 P.M., September 7, 1917

GLADYS MORGAN FARMER
ORGANIST FIRST METHODIST CHURCH

- 1 Marche Funibre et Chant Seraphique *Guilmant*
This selection of the world's greatest organist was composed in memory of his mother at her death. The funeral march represents the pathos of broken ties on this side while the chant of the seraphs indicates the heavenly bliss of the soul on the other side. The melody of the chant is carried on the pedal organ while the harp forms the accompaniment.
- 2 Chant du Bonheur *Lemare*
One of Lemare's charming compositions which the name, "A Sweet Song," best describes.
- 3 In Springtime *Kinder*
This selection was dedicated by the composer to Melvin Biggs Goodwin of Philadelphia and is a brilliant suggestion of springtime gayety.

FREDERICK W. GOODRICH
ORGANIST ST. MARY'S CATHOLIC CHURCH

- Tone Poem: Finlandia *Jean Sibelius*
The strongly national character of this composition suggests a folk-song origin, but the themes are original. Sibelius is said to possess the faculty of evolving a folk-melody "that would deceive the very elect."
- 2 a Wiegenslied, Cradle Song *Herbert Botting*
A charming number by an English composer.
 - b Intermezzo, from Suite in G Minor Op. 29 *Everett E. Truette*
A beautiful number from a recent work of the well known American composer.
 - c In Twilight *J. Frank Frysinger*
J. Frank Frysinger, born at Hanover, Pa., in 1878, is well known as a composer of effective and interesting organ music. This Nocturne is full of lovely melody.
 - 3 Schiller March *Giacomo Meyerbeer*
This magnificent and stately march was written for the Festival held at Paris in 1859 to commemorate the centenary of the birth of the poet, Schiller. It contains much grand and striking music, in which the heavy reeds of the organ bear an important part.

FRANCIS RICHTER, A. A. G. O.
THE BLIND ORGANIST

- 1 First Movement from Symphony in E. Flat *Francis Richter*
This work was inspired through the interest taken in the progress and the anxiety for a quick completion of our Auditorium Organ, and is therefore being written especially for it.
The movement opens with eight introductory measures, Maestose four-fourth time in the key of E flat, played on the full Organ; after which follows the movement proper (Allegro con Spirite). The first subject, in the Tonic key, is the highest expression of joy the author could find, and sparkles with happy rhythms and an abundance of coloring. We are led, through a connecting episode, to a milder, romantic theme in the key of B flat, with a short Coda. Thence follows the development in which, a short Fugue, based on a new theme, is inserted. Through modulations, both relative and remote, we are finally brought back to the Dominant seventh of our Tonic key, and once more the first theme is heard, with the usual change expressed in Sonata form in the connecting episode, and thence, the second theme in Tonic key, with the Coda lengthened so as to form a proper ending for the Movement.
- 2 Polonaise in E Flat *Chopin-Richter*
This Polonaise, was adapted by Mr. Richter as a Clarinet Solo, and will be represented thus on the Organ, with an orchestral accompaniment full of color and strength.
- 3 Overture to Tannhauser *Wagner*

Saturday Evening, 8:15 P.M., September 8, 1917

WILLIAM E. ZEUCH
CONCERT ORGANIST OF BOSTON, MASS.

- 1 Fantasia *Berens*
A number that well displays the resources of the organ.
- 2 Sister Monica *Couperin*
Couperin lived 1668-1733, and nowhere may be found a more charming melody than this dainty conception.
- 3 In Summer *Stebbins*
Mr. Stebbins is an American organist, and this pastorate is one of the most original in organ literature.
- 4 Three Minuets *Boccherini*
Beethoven
Sebock
- 5 Evening Song *Bossi*
Mr. Bossi is the best known of Italian organists, his compositions reflect the German School.
- 6 Toccata *Gigout*
M. Gigout is one of the older French organist-composers. His work is severely classical.
- 7 Meditation *Sturges*
This lovely berceuse is by a well known English composer and is deservedly popular.
- 8 Allegretto *Wolstenholme*
Mr. Wolstenholme is a distinguished composer and organist of England. Despite the handicap of blindness he has achieved a prominent place as a composer.
- 9 Cradle Song *Dickinson*
Mr. Dickinson is organist of the Brick Presbyterian Church in New York.
- 10 Ride of the Valkyries *Wagner*
Based upon two motives from the opera, the Valkyries' call, and the Valkyrie melody. In picturesque description of the rush and dash of these wild horse-women of the air, amid which are heard the wild cries of the sisters, "The Ride" is vividly effective.

Sunday Afternoon, 3 P.M., September 9, 1917

WILLIAM E. ZEUCH
CONCERT ORGANIST OF BOSTON, MASS.

- 1 Torchlight March *Guilmant*
- 2 Secret of Love *Klein*
- 3 O, the Lilting Springtime *Stebbins*
A charming number by a talented American organist.
- 4 Canon *Schumann*
This is one of a set of pieces composed for a pedal piano, and which is much more effective on the organ. A canon is a musical form in which two or more parts take up in succession exactly the same progression of notes.
- 5 Largo and Finale, from "New World Symphony". *Dvorak*
No composer excelled Dvorak in his rich and original orchestration, and these numbers do not lose by transcription.
- 6 Meditation *D'Eury*
- 7 Scherzo *Vierne*
- 8 Kamennoi-Ostrow *Rubinstein*
A very effective transcription of a very popular piano piece.
- 9 Finale *Vierne*
A brilliant number which closes an Organ Symphony by Vierne, the Scherzo also belonging to this work.

Specification of an Organ

PREPARED BY
THE ERNEST M. SKINNER COMPANY, BOSTON, MASS.
for PORTLAND AUDITORIUM, PORTLAND, OREGON

GREAT ORGAN

PIPES		PIPES	
16' Diapason	61	4' Flute	61
8' First Diapason	61	2' Fifteenth	61
8' Second Diapason	61	Mixture	183
8' Claribel Flute	61	16' Euphonium } <i>Interchangeable</i>	
8' Philomela	61	8' Tuba } <i>with Solo</i>	85
8' Erzähler	61	4' Clarion } <i>with Solo</i>	
4' Octave	61	Cathedral Chimes—Blank	

SWELL ORGAN

16' Bourdon	73	8' Voix Celestes	73	16' English Horn	73
8' Diapason	73	8' Flute Celeste	73	8' Cornopean	73
8' Clarabella	73	4' Octave	73	8' Flügel Horn	73
8' Gedeckt	73	4' Flute	73	8' Vox Humana	73
8' Spitz Floete	73	2' Flautino	73	4' Clarion	73
8' Salicional	73	Mixture	219	Tremolo	

CHOIR ORGAN

16' Gamba	73	2' Piccolo	73
8' Diapason	73	8' Clarinet	73
8' Concert Flute	73	Celesta	
8' Dulcet	146	Celesta Sub } Harp	61
8' Viol d'Orchestre	73	Tremolo }	
4' Flute	73		

SOLO ORGAN

8' Stentorphone	73	16' Euphonium }	
8' Philomela	73	8' Tuba }	85
8' Gross Gamba	73	4' Clarion }	
8' Gamba Celeste	73	8' Tuba Mirabilis	73
8' Orchestral Oboe	73	Tremolo	
8' French Horn	73		

PEDAL ORGAN—Augmented

32' Diapason	32	8' Octave	32	16' Trombone	32
16' Diapason	32	8' Gedeckt	32	16' English Horn	32
16' Violine	32	8' Still Gedeckt	32	8' Tromba	32
16' Gamba	32	8' Cello	32	8' Tuba	32
16' Bourdon	32	4' Super Octave	32	4' Clarion	32
16' Echo Lieblich	32	32' Bombarde	32		

COUPLERS

COUPLERS
Swell to Choir }
Solo to Choir } *Unison Choir Unison Release*
Great to Solo }

Swell to Pedal }
Swell to Pedal Super }
Great to Pedal }
Choir to Pedal } **PEDAL**
Choir to Pedal Super }
Solo to Pedal }
Solo to Pedal Super }

COMBINATIONS—Adjustable at the console and visibly operating the Draw Stop Knobs.

SWELL—1, 2, 3, 4, 5, 6, 7—On and Off Pedal to Manual

GREAT—1, 2, 3, 4, 5, 6, 7—On and Off Pedal to Manual

CHOIR—1, 2, 3, 4, 5, 6, 7—On and Off Pedal to Manual

SOLO —1, 2, 3, 4, 5, 6, 7—On and Off Pedal to Manual

PEDAL—1, 2, 3, 4, 5, 6, 7—On and Off Pedal to Manual

FULL —1, 2, 3 Connect all combinations numbered 5, 6, 7

Swell to Pedal }
Great to Pedal }
Solo to Pedal } *Affected by reversible pistons*
Swell to Great }

Swell combination pistons duplicated by pedals.

Pedal combinations to operate Great combinations when Great combination operate Pedal combinations.

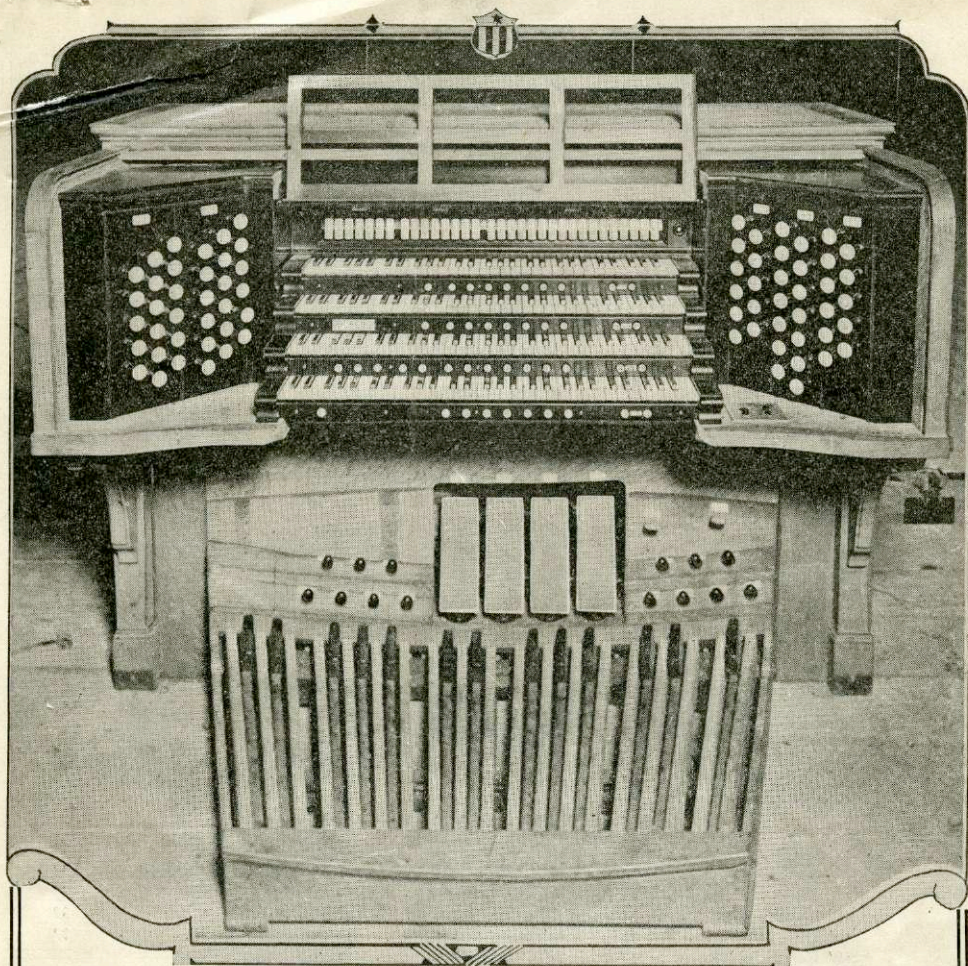
Swell to Great }
Choir to Great } *Swell Unison Release*
Solo to Great }

OCTAVE

Swell to Great Super Swell Sub
Swell to Great Sub Solo Super
Choir to Great Super Solo Sub
Choir to Great Sub Choir Super
Solo to Great Super Choir Sub
Solo to Great Sub Great Super
Swell Super

MECHANICALS

Balanced Swell
Balanced Choir
Balanced Solo
Balanced Crescendo
Great to Pedal Reversible



Console Auditorium Organ

THE ERNEST M. SKINNER COMPANY

Builders

BOSTON, MASSACHUSETTS

Mr. Skinner has been styled "The Master Organ Builder of the World."
The following are some of the great organs in this country built by him:

CATHEDRAL OF ST. JOHN THE DIVINE, New York
COLLEGE OF THE CITY OF NEW YORK, New York
ST. THOMAS EPISCOPAL CHURCH, New York
FIFTH AVENUE PRESBYTERIAN CHURCH, New York
CARNEGIE MUSIC HALL, Pittsburg
OLD SOUTH CHURCH, Boston
HARVARD UNIVERSITY
COLUMBIA UNIVERSITY